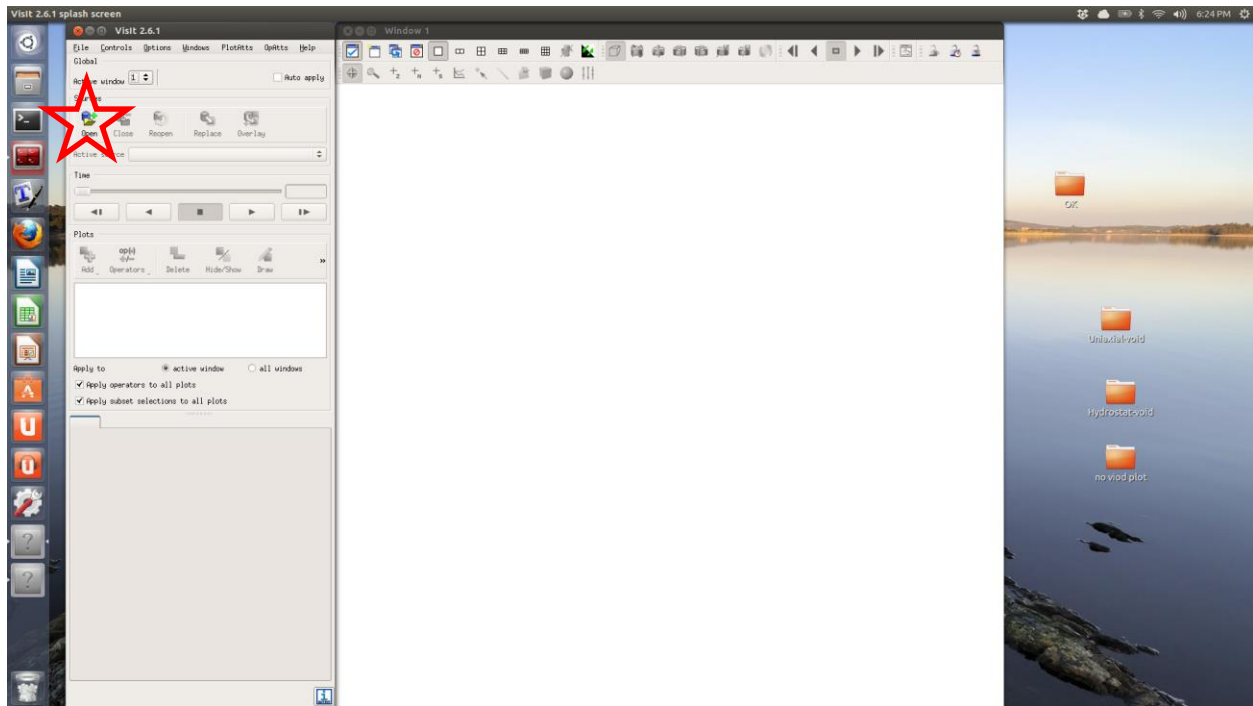
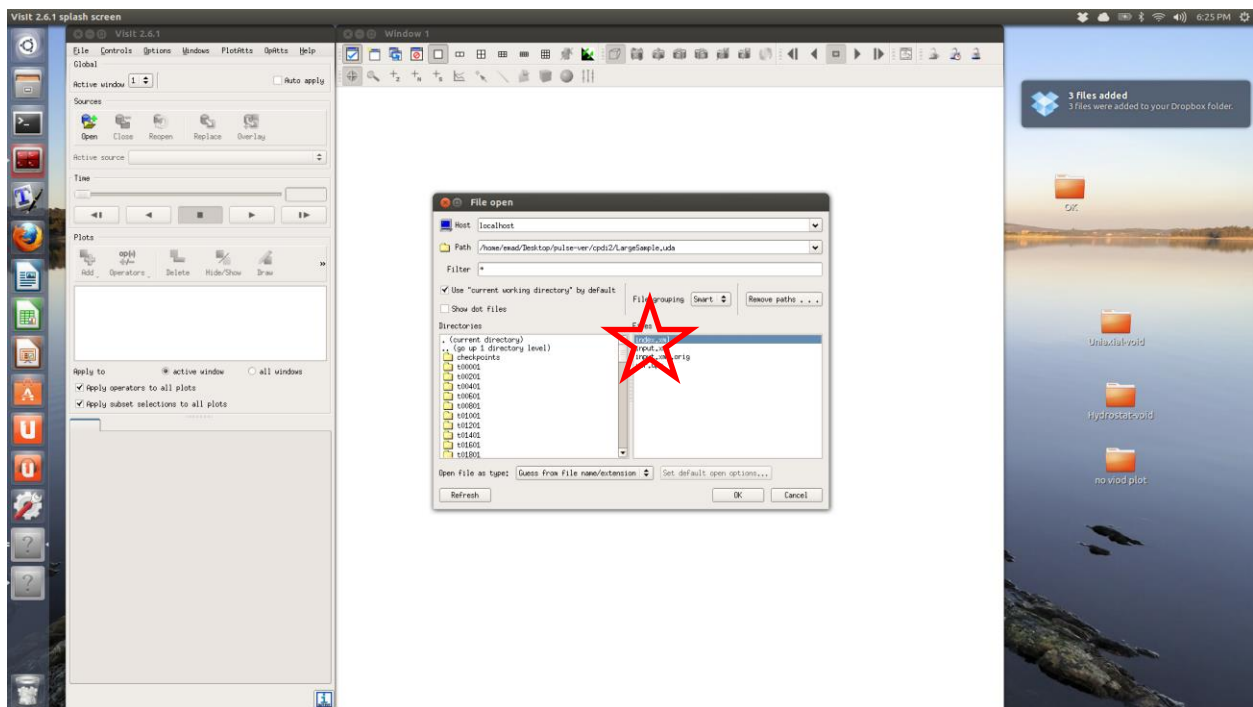


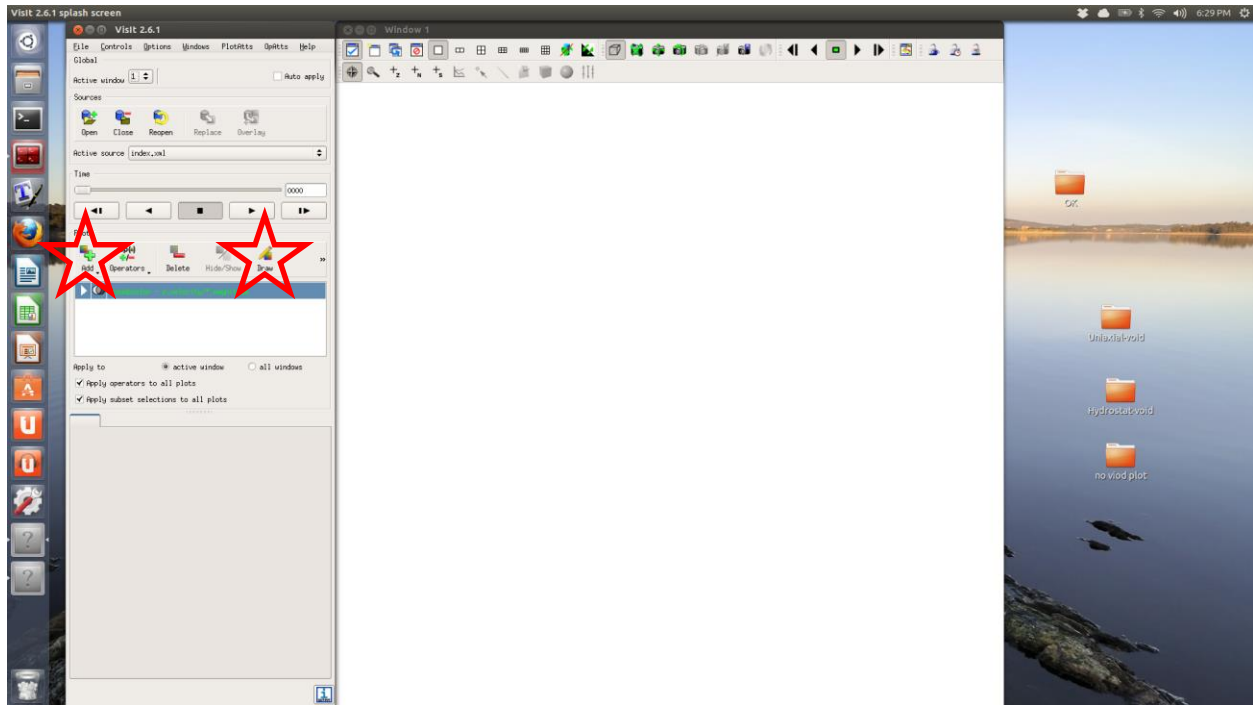
- 1) Open the Visit.
- 2) Open the uda file (your_file_name.uda) in the Visit.



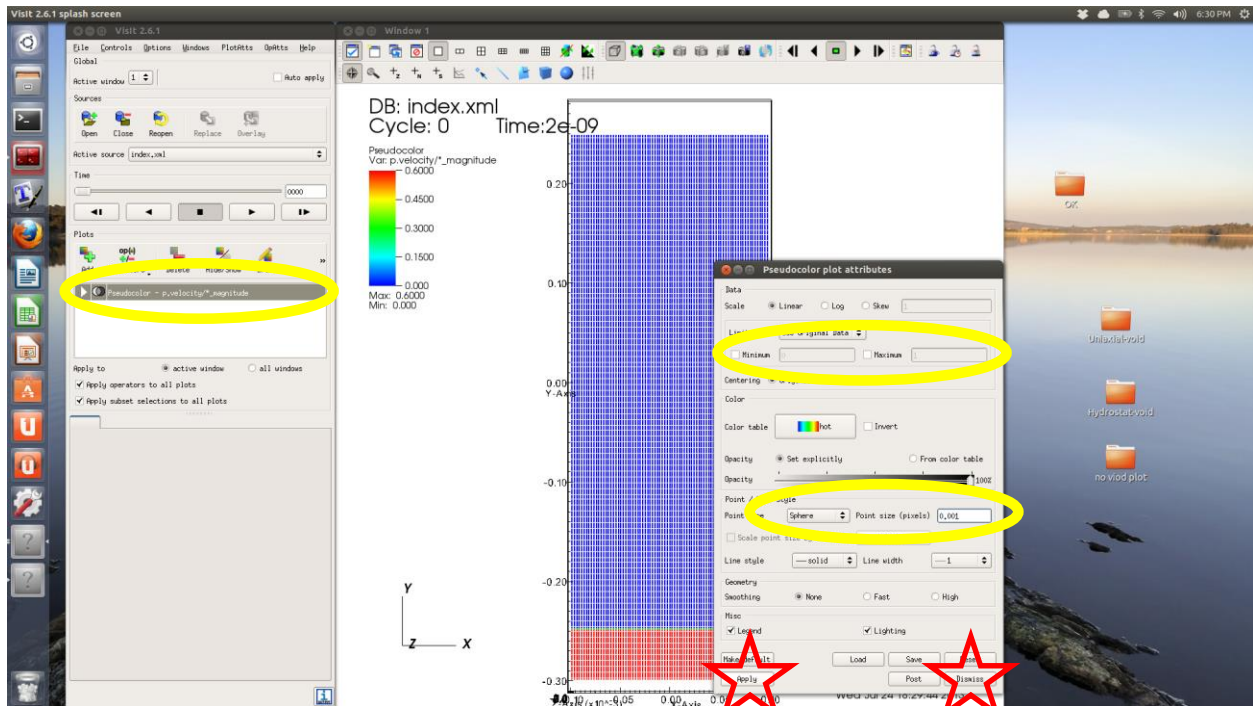
- 3) Open the index.xml file.



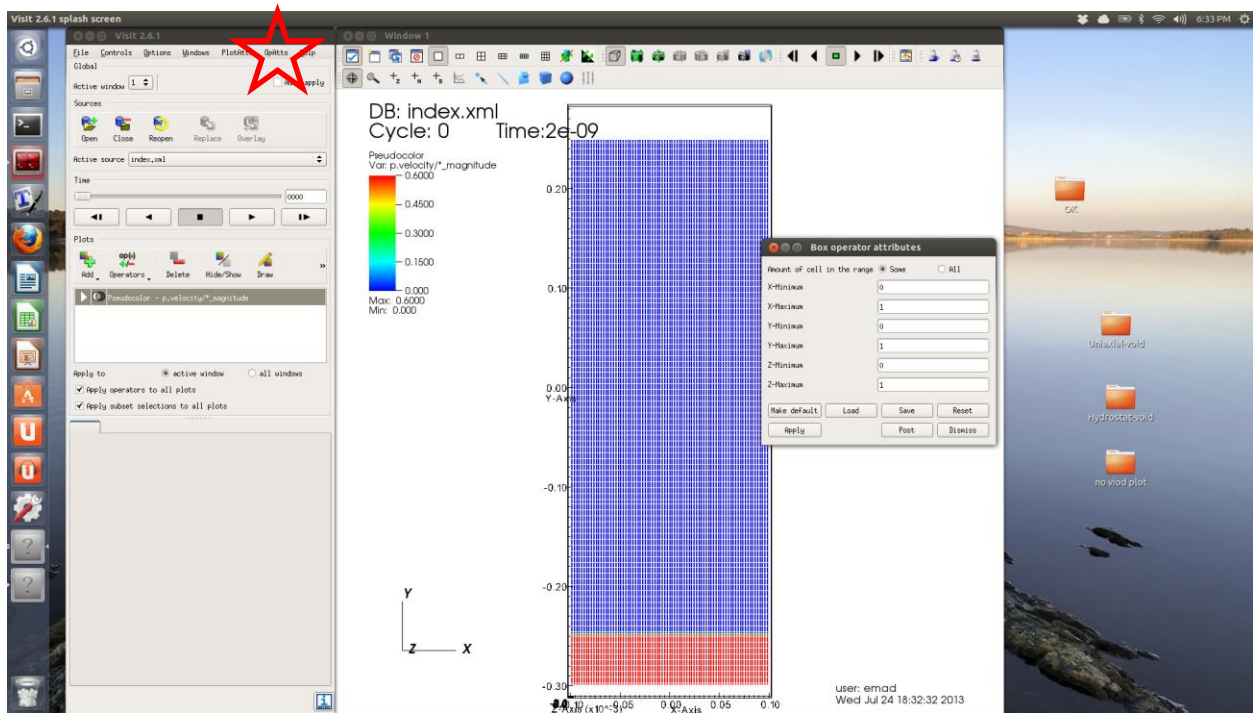
- 4) Add a plot using the “Add” button, and choose “psoudocolor” , “p.velocity” , “*” in the following menu. Then hit the “Draw” button.



5) Double click on your plot (yellow ellipse in the figure below). At the top of the new window, you can choose your velocity limit to avoid changing the limit in each time step. And at the bottom of the window choose “Sphere” and size of each sphere. First, choose a very small size (0.001-0.0001) then adjust it. If you choose a very large size at the beginning your computer may crash.

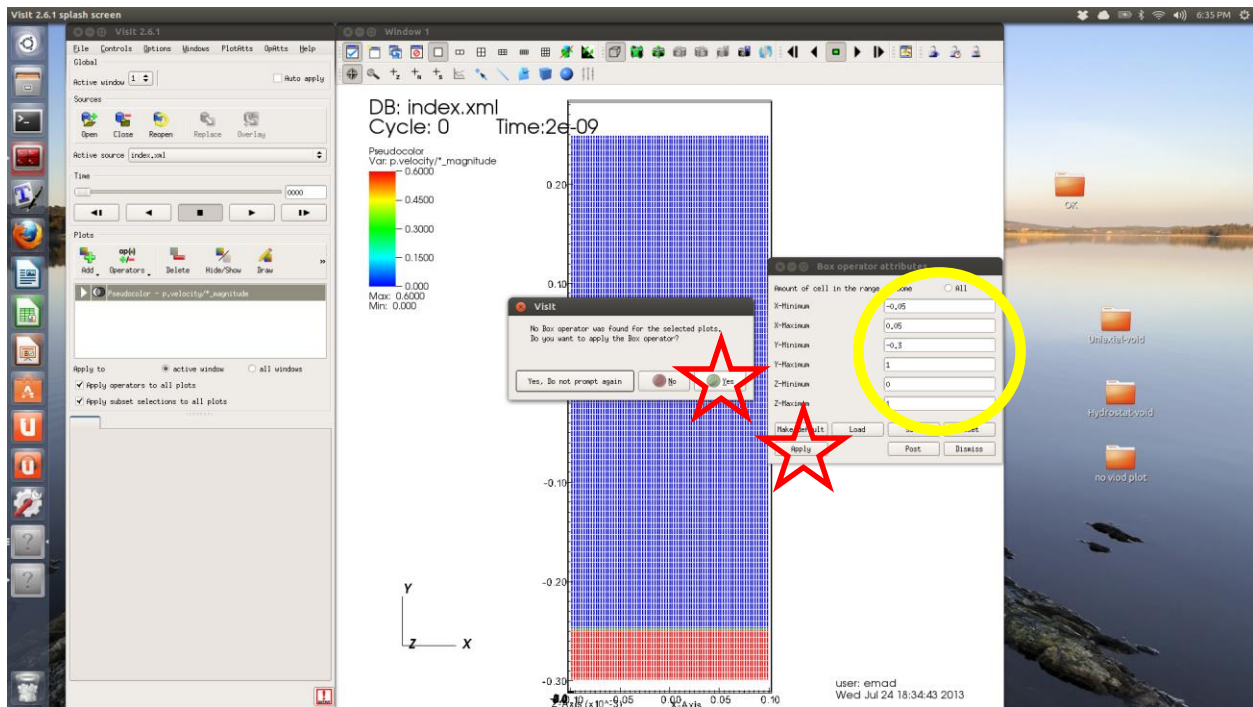


6) In the “OpAtts” tab, select the “selection” then “box”

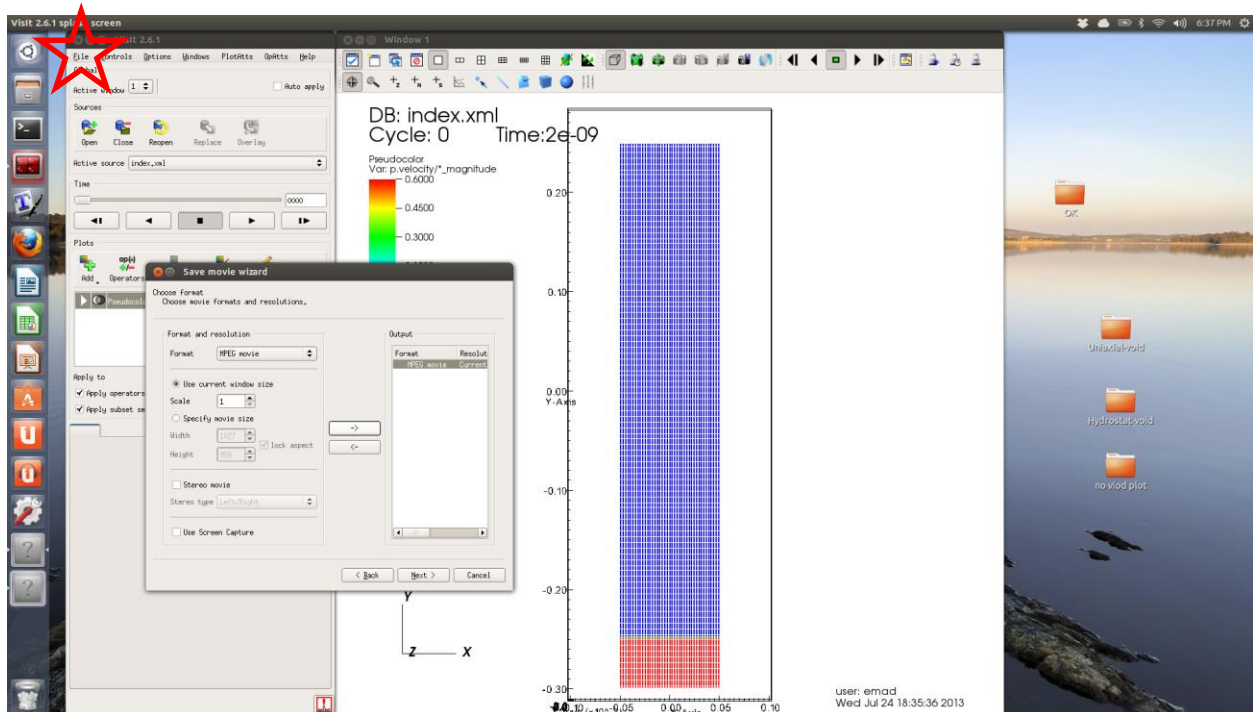


7) In the “box operator attributes” adjust the size of the box which you want to show from the simulation domain. You can choose the size of this box to show the whole simulation domain without duxseals or you can show only half or quarter of the domain.

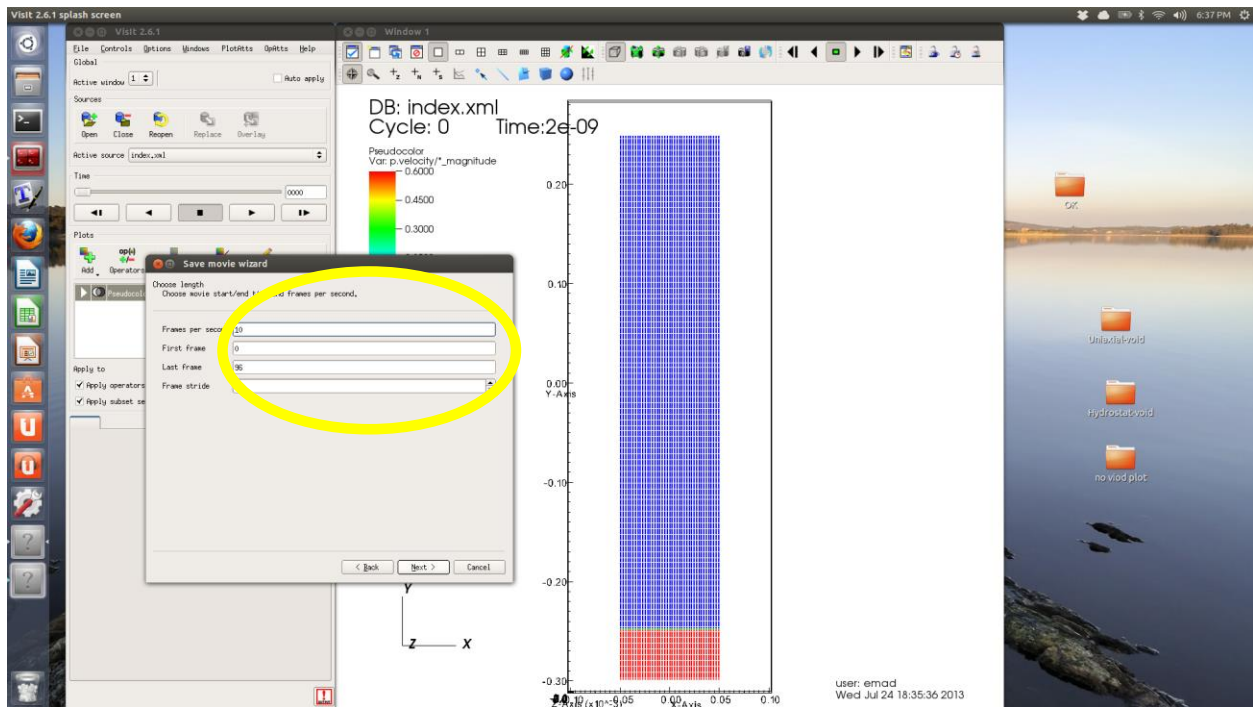
8) Hit “Apply” and “yes” for the following question. After that, you may need to hit the “Draw” button to see your selection.



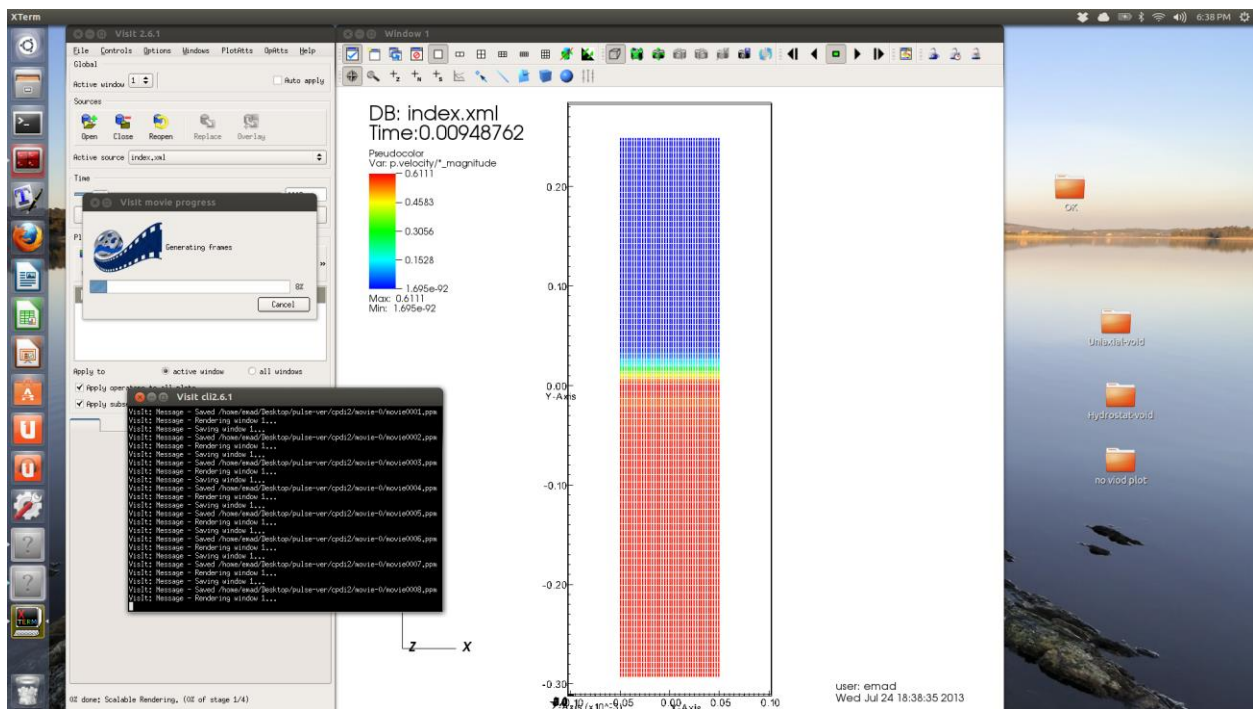
9) In the “File” tab, select “make movie”. You can adjust your movie size there.



10) After hitting next. You will see the following window which you can adjust the duration and FPS of your movie by changing “Frame per second” and “Last Frame”.



11) Press the next few times in the follow up windows until visit start making your movie.



12) And you are done!